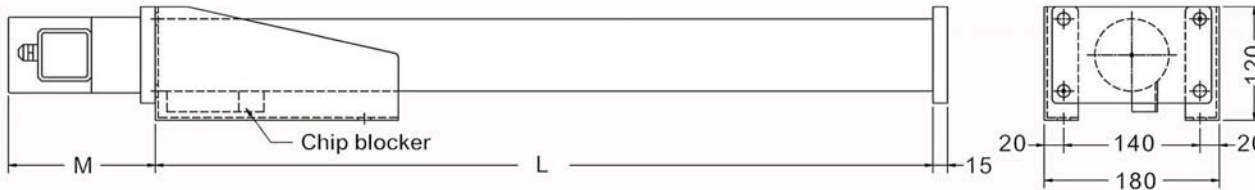
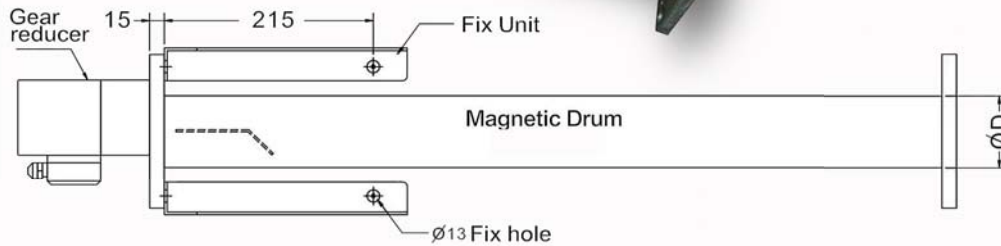


Magnetic Screw Conveyor:

Reliable, affordable and effective magnetic conveyors that can be applied to many applications. Suitable for milling, hobbing, broaching or for removing short chips (less than 4") from the tank. Please visit our website at www.bergmanif.com for complete details and option.



- All bearings, moving and rotating parts are enclosed within the stainless steel tube.
- The cutting chips are discharged by spiral magnet and released while the coolant drains back to the tank.
- An economical and flexible solution that can be applied in different angles and working situations.
- Requires little space and custom capacities or chutes can be fabricated to your application.

Model	L	M	D	Dive Motor	ferrite	Rare Earth
SCM-50	800 ~ 1600	151	50.8	25W, 220v	45 kg/H	60 kg/H
SCM-1	800 ~ 2000	151	76.3	25W, 220v	90 kg/H	120 kg/H
SCM-2	800 ~ 3000	185	114.3	25W, 220v	150 kg/H	230 kg/H

For best effect we recommend using the rare-earth magnets of which will increase the holding force to 4200-gauss.

Model Series: SSCM (rare-earth)

Model Series: SCM (ferrite)

Model	Type-8	Type-10	Type-12	Type-14	Type-16	Type-18	Type-20	Type-22	Type-24	Type-26	Type-28	Type-30
SCM-50	800mm	1000	1200	1400	1600							
SCM-1	800mm	1000	1200	1400	1600	1800	2000					
SCM-2	800mm	1000	1200	1400	1600	1800	2000	2200	2400	2600	2800	3000