



Parts, Repairs and Service

[www.gockelamerica.com](http://www.gockelamerica.com)

GMSi Group, Inc.  
17 Town Forest Road  
Oxford, Massachusetts 01540

PO Box 123  
Oxford, Massachusetts 01540

Tel: +1 (508) 987-0121  
Fax: +1 (508) 987-1233

eMail: [info@gmsigroup.com](mailto:info@gmsigroup.com)

- Factory Trained Field Technicians
- Preventative Maintenance Programs
- Replacement Machine Parts
- Application and Operator Training
- Factory Warranty Support
- Machine Accessories and Grinding Supplies

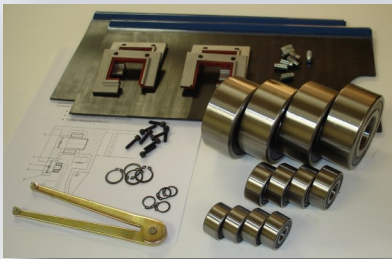
## When compromise is not an option

Service support and maintenance programs that prevent costly downtime of your Göckel America / GMSi Group serviced machines. Preventative maintenance, parts availability and field service programs with our factory trained service team.

### Field Service:

All members of our service team are factory trained and certified on Göckel precision grinding machines. Our mission is to provide timely and professional service.

- \$5,000,000 liability insurance
- Safety Certified
- Servicing all of North America



Machine parts packages for maintenance and rebuild.

### Parts Inventory:

At Göckel America we have available a \$ 500,000 inventory of replacement parts, accessories and supplies.

- Maintenance parts packages
- Emergency high valued components
- Accessories to upgrade your machine
- Rebuild project BOM



## Grinding Supplies

GMSi offers the most comprehensive inventory of grinding supplies used for Göckel type applications. As with all our brands, we faithfully support with reliable and comprehensive service.

Please visit and review our products at the following web addresses.

[www.gockelamerica.com](http://www.gockelamerica.com)

Precision Grinding Machines for manufacturing and machine knife applications.

[www.gmsigroup.com](http://www.gmsigroup.com)

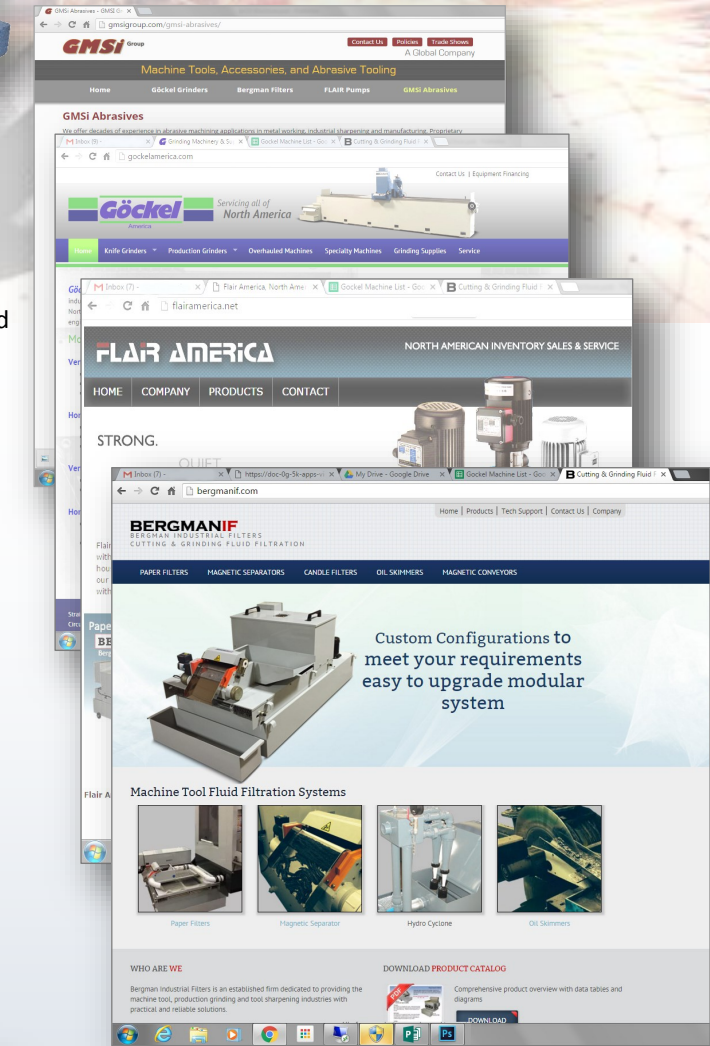
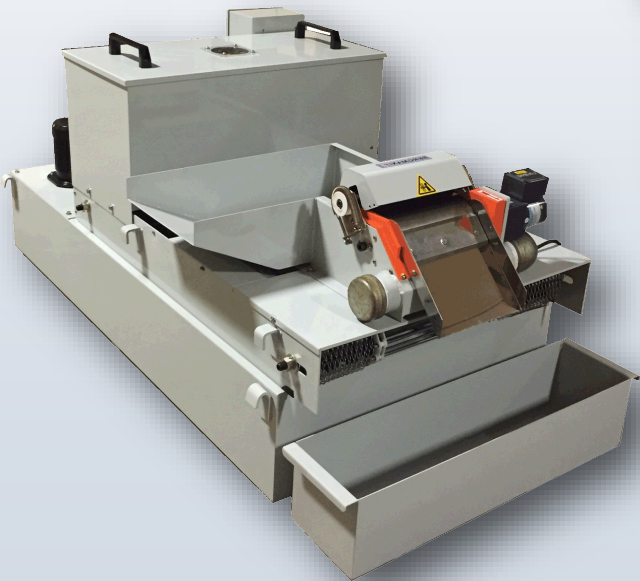
Machinery, Accessories and Abrasive Tooling

[www.flairamerica.net](http://www.flairamerica.net)

Coolant supply pumps and machine parts

[www.bergmanif.com](http://www.bergmanif.com)

Machine fluid filtration systems and supplies



## Grinding Coolant and Filtration

Adding one of our filtration systems will prolong coolant life, enhance coolant and abrasive performance along with improved work-piece finish. Our systems are plug-and-play to most Göckel and Reform type knife grinders.



## Grinding Motor Rebuilds:

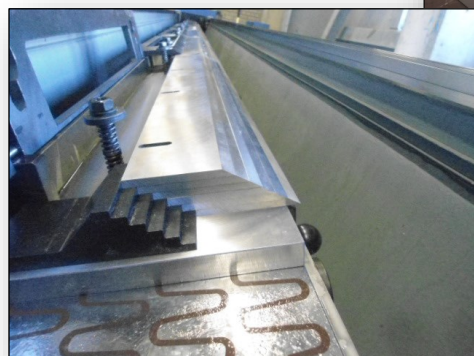
Göckel grinding motors are rugged precision spindles designed to take the loads of long term production grinding. Designed specifically for the Göckel grinder it is very important that a qualified technician properly install and service to factory specification. We offer full in-house service for your grinding motor.

### Other Machine Services:

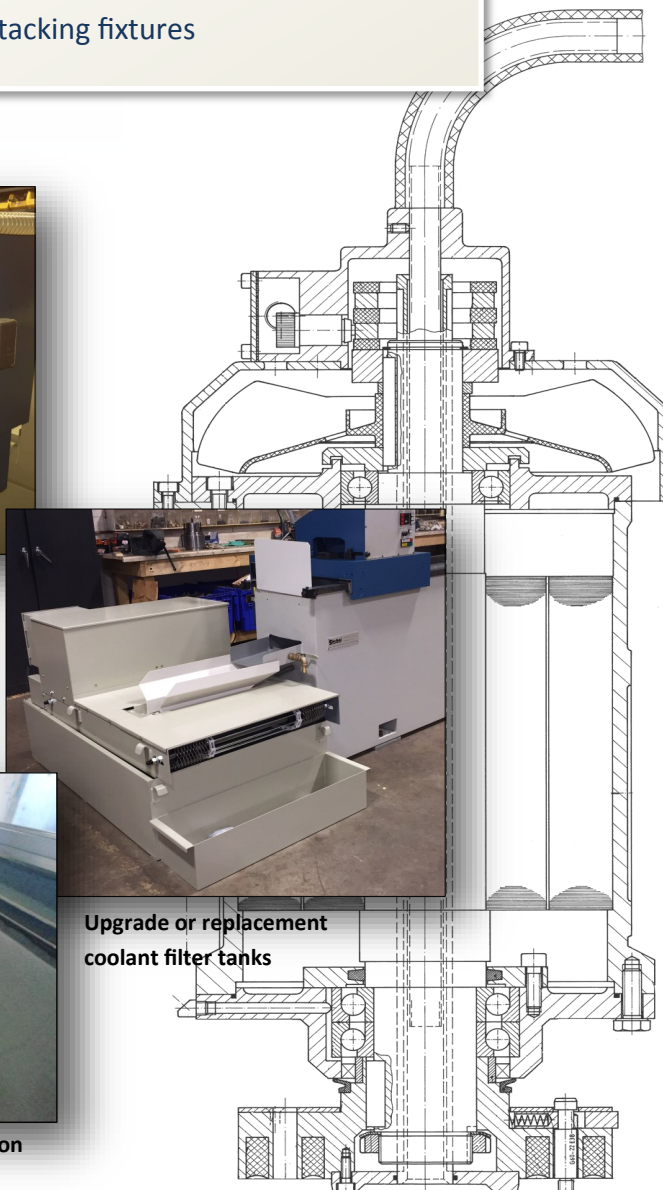
- Grinding Motor and quick-change flange Rebuilds
- Replacement and upgraded coolant filter systems
- Hand honing device repairs and services
- Servo drive, motor repairs and replacements
- Grinding carriage and support rebuilds
- Work piece clamping and stacking fixtures



Automatic lubrication pump  
Affordable servo drive motors



Stacking fixtures built to your application  
and production demand.



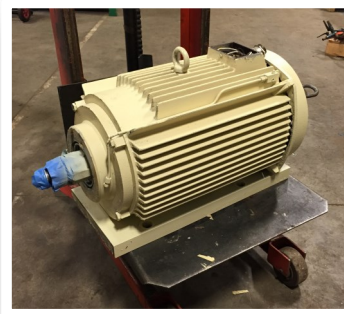
Upgrade or replacement  
coolant filter tanks



Grinding motors in line for rebuild



Quick-change flange rebuilt with  
factory coils and properly insulated



Reassembled with all new factory parts  
and painted to your machines color.



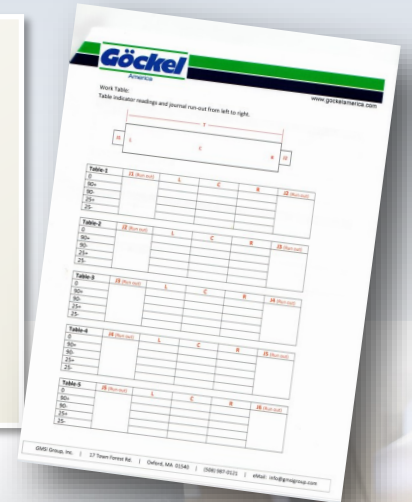
Packaged for a safe return trip in our  
custom built box.

## Preventative Maintenance

*Preventative Maintenance* is core to our service program. With proper PM your machines performance and longevity are realized. We offer custom programs specific to your machine hours, applications and production schedule. After completion you will receive an evaluation report with recommended considerations, solutions and improvements.

### Machine Evaluation:

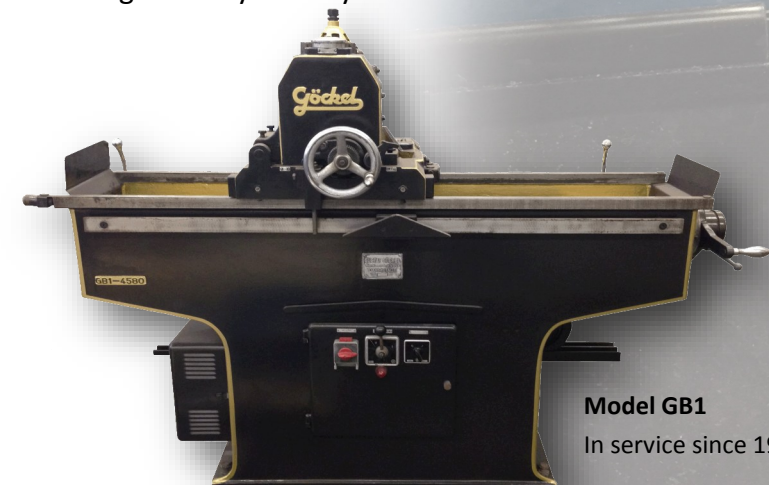
- Level and adjust machine in place
- Measure guide ways and report on tolerance
- Measure worktable and journal run out
- Measure for deviation in down feed slide and screw
- Inspect overall condition of key components
- Photograph for reference and reporting
- Report on our findings with recommended actions



## Annual PM Service Program

Recommended to all our customers is an annual preventative maintenance service visit from one of our factory trained field technicians.

- Schedule to avoid costly down time
- Keep your machine properly calibrated
- Combine repairs with other machines to save
- Discount voucher on additional service
- Remedy any tolerance issues before they are unreparable
- Prolong the duty life of your machine



**Model GB1**  
In service since 1963.



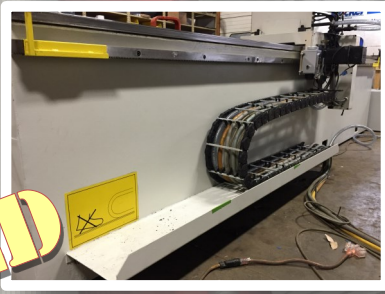
## Refurbished Knife Grinders

Our team has decades of experience with service, repair and overhauling the Göckel knife grinding system. Our inventory is continuously changing. Please contact us for current availability.

G50eIT x 3100mm  
15-hp Grinding Motor  
Servo Drives  
360° magnetic work table



G50eIT x 4100mm  
15-hp Grinding Motor  
Servo Drives  
360° magnetic work table



G50eIT x 3100mm  
10-hp Grinding Motor  
Servo Drives  
360° magnetic work table



Please contact us for  
current availability  
(508) 987-0121

## Refurbished Knife Grinders

Attention to details that yield lasting results. Professionally refurbished knife grinders that offer savings and long-term reliability.

### What You Can Expect:

- All machines are completely stripped down cleaned, resurfaced and painted
- Grinding motor is rebuilt with new bearings, seals and dynamically balanced
- The support, slide and screw are serviced and refitted
- Guide ways are measured for accuracy and scraped to accepted tolerance
- New guideway bands and carriage rolls are replaced and properly adjusted
- Worktable hardware is replaced to suite your application
- All new cables and carrier are installed and properly numbered to the cabinet
- The operator panel is rebuilt with all new controls
- New automatic lubricator and lube system
- New coolant supply pumps, plumbing and hoses
- Grinding coolant filtration options are available based on your requirements

### Machine Tolerance:

We use the latest techniques to the machine tool rebuilding trade to bring our machines back to acceptable working tolerance and function. All bearings and were parts are replaced with new.



The complete machine is meticulously cleaned of loose paint and rust.



Special chemical treatment that converts white metal and any reaming rust to a paintable surface.



A two part industrial epoxy is used to paint the machine yielding long term protection.

